



■ BASF
We create chemistry

Ridesco™ WG

Insecticide

Introducing Ridesco™ WG insecticide, BASF's newest innovation in pest control. Combining dinotefuran and alpha-cypermethrin, two active ingredients that are trusted by pest management professionals (PMPs) around the world, Ridesco WG insecticide is a powerful tool for PMPs to manage a wide range of troublesome pests.

Go Beyond Expectations with Ridesco WG Insecticide

Go Simple

- Easy to mix and measure with a convenient built-in measuring cap
- Quickly disperses in water, easy-to-handle WG formulation

Go Broad

- Flexible label allows for application indoors, outdoors, and in food handling areas, plus on landscapes and lawns
- Powerful performance on a broad range of critical pests including American cockroaches, ants, house flies, spiders, bed bugs and more

Go Strong

- Two AIs trusted by PMPs worldwide – a powerful pyrethroid and a unique neonicotinoid – now together in one convenient treatment
- A great addition to an IPM program, with dual modes of action for effective insecticide resistance management

Simplify Application with Ridesco WG Insecticide

Ridesco WG insecticide features a measuring cup that is built right into the cap, making mixing and measuring simple and easy.

Ridesco WG insecticide has a simple rate, labelled for use at 19g / gallon / 1000 sq ft for many pests and sites.

Plus, with a dry WG formulation that is stable, quickly disperses in water and is easy to handle, Ridesco WG insecticide can easily be stored in a warehouse or on the back of the truck without concerns about formulation separation.



Where can Ridesco WG insecticide be applied?

Application Site

Commercial locations	✓	Yes
Residential locations	✓	Yes
Outdoor perimeters	✓	Yes
Interior areas	✓	Yes
Food handling areas	✓	Yes
Landscapes and lawns	✓	Yes

Protect against Critical Pests, Wherever They Go

With a broad and flexible label, Ridesco WG insecticide is a powerful choice for both outdoor perimeter treatments and interior applications. It allows for Crack & Crevice®, spot, and void treatments in and around commercial and residential areas, as well as general area treatments in food-handling

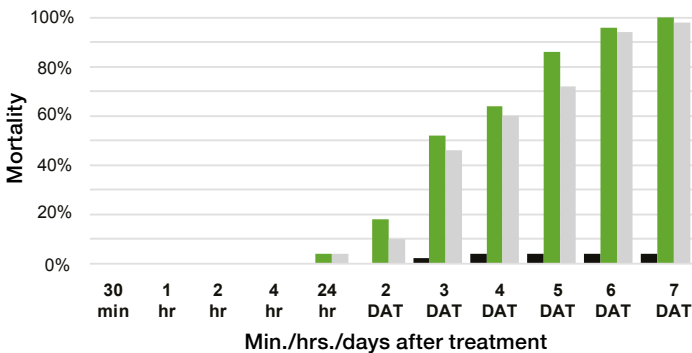
areas. Ridesco WG insecticide can also be used on landscapes and lawns, as well as many other application sites. It is the only dilutable product that allows treatments to depths by doubling the amount of product (38 grams/ gallon / 1000 sq.ft / 12 inches of depth).

With two trusted active ingredients together in one formulation, Ridesco WG insecticide performs well under even the harshest conditions against many hard-to-manage pests.

Trial Results: Ridesco WG insecticide demonstrated excellent efficacy against American Cockroaches and Argentine Ants. On different surfaces, it performed better and faster when compared to competitive products (see results below).

American Cockroaches | 0 days-aged | porous surface

4 hrs exposure time for crawling insects

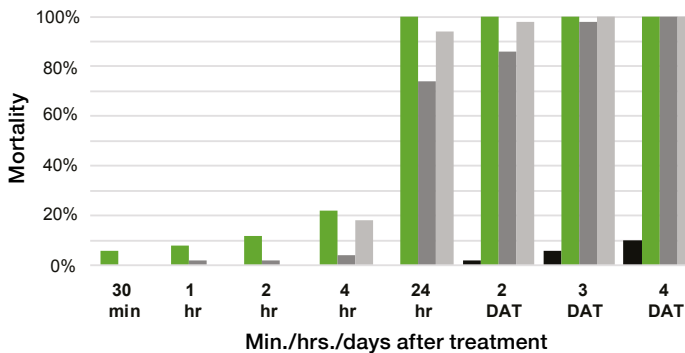


■ Untreated ■ Ridesco WG ■ Suspend PolyZone

Testing completed by Snell Scientifics, LLC 4/2019-7/2019

Argentine Ants | 0 days-aged | non-porous surface

4 hrs exposure time for crawling insects



■ Untreated ■ Ridesco WG ■ Temprid FX ■ Onslaught FastCap

Enhance Your IPM Program

With two modes of action together in one product, Ridesco WG insecticide is a great option for insecticide resistance management (IRM). It is an ideal addition to an IPM/IRM program and fits well in a quarterly or bi-monthly product rotation.

Always read and follow label directions.

Before using be sure Ridesco is registered in the state where it will be used. Check any special state requirements for the use of neonicotinoids. Ridesco is a trademark and Crack & Crevice is a registered trademark of BASF. Onslaught is a registered trademark of MGK. PolyZone, Suspend and Temprid are registered trademarks of Bayer.

©2021 BASF Corporation. All rights reserved. PSS 21-2800

Go Beyond with Ridesco WG Insecticide

When you add Ridesco WG insecticide to your interior and exterior perimeter treatment protocols, you can be assured that the product will perform to the highest standards. BASF's experienced technical and sales support teams stand behind our products and are here to help you grow your business, drive success, and provide you and your customers with peace of mind.