



THE POWER OF TANDEM

One Product, Two Threats for More Than 90 Pests



DUAL MODES OF ACTION TACKLE A WIDE VARIETY OF PESTS

Tandem controls more than 90 pests including:

- ▶ Ants
- ▶ Beetles
- ▶ Caterpillars
- ▶ Chinch Bugs
- ▶ Cockroaches
- ▶ Fleas & Ticks
- ▶ Flying insects
- ▶ Grubs
- ▶ Mites
- ▶ Mosquitoes
- ▶ Wasps
- ▶ Honeydew-producing insects
- ▶ Occasional invaders (spiders, crickets, grasshoppers, stink bugs)
- ▶ Wood-destroying insects (carpenter ants, carpenter bees, drywood termites)

**See label for full list of pests controlled*

Tandem™ insecticide provides pest control from “cupboard to curb” with its broad and flexible label. Tandem is labeled to control more than 90 pests and can be applied indoors and outdoors, and in residential and commercial environments including food-handling areas. Tandem is powered by two active ingredients, lambda-cyhalothrin and thiamethoxam, and is formulated with iCAP technology™ to ensure quick knock down and long-lasting residual for complete control.

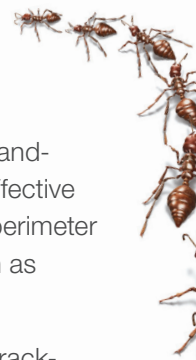
VERSATILITY AND SIMPLICITY IN A SINGLE PRODUCT

Tandem can be applied indoors as a spot, crack-and-crevice or void treatment. Outdoors, Tandem is effective as a crack-and-crevice, spot treatment, banded perimeter spray or full yard treatment for key turf pests such as grubs and chinch bugs.

Food-Handling: Tandem can be applied as a crack-and-crevice, spot or structural void treatment in food/feed areas.

“Cupboard to Curb”: A full turf-application label allows Tandem applications in lawns and landscapes to control sucking and chewing plant pests as well as grubs, billbugs, chinch bugs, cutworms/armyworms and more.

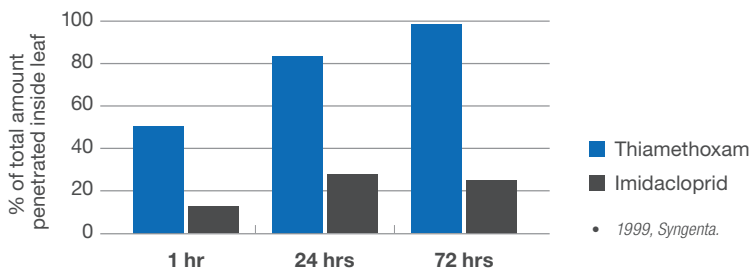
Convenience in a Bottle: With the dual chemistry and broad use patterns of Tandem, technicians can carry just one product that is easy to use in multiple locations for control of a variety of pests at their source. Pest Management Professionals (PMPs) work hard and their products should too.



PLANT SYSTEMIC ACTION FOR CONTROL OF HONEYDEW PRODUCERS

Plant sucking insects such as aphids, whiteflies and scales produce honeydew, which serves as an important food source for ants. To control ant populations, it is important to inspect landscape ornamentals and bushes for signs of these honeydew-producing insects. Tandem contains thiamethoxam, which offers unsurpassed plant systemic action. More of the active ingredient moves quickly into the leaves where honeydew producers feed. For fast and effective control of honeydew-producing insects choose Tandem, which works as hard as you do.

Systemic Action within Plants



THE POWER OF iCAP TECHNOLOGY

Often copied but never duplicated, iCAP technology is used within the Tandem formulation to ensure it is protected against harsh weather conditions, which will result in more effective control. Formulated with microcaps of multiple sizes, Tandem will provide immediate and residual control for up to four months.

BOTTOM LINE

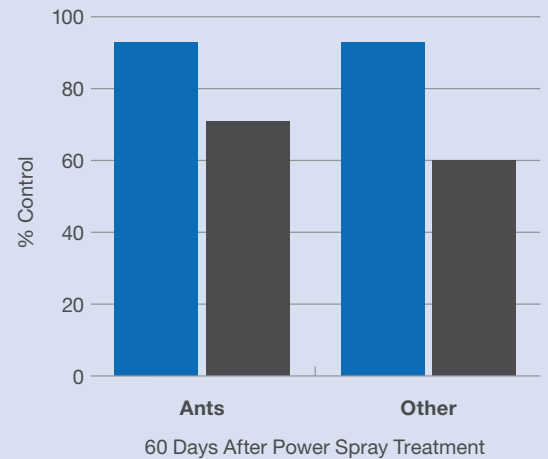
- ▶ Dual modes of action ensure control of a broad range of pests
- ▶ Delivers complete indoor and outdoor pest control including food handling areas
- ▶ One product makes tackling multiple pest issues easier and more convenient for PMPs

To find out how Tandem can help your business, call **1-866-SYNGENT(A)** or visit **www.syngentapmp.com**

THE POWER OF TANDEM IS PROVEN

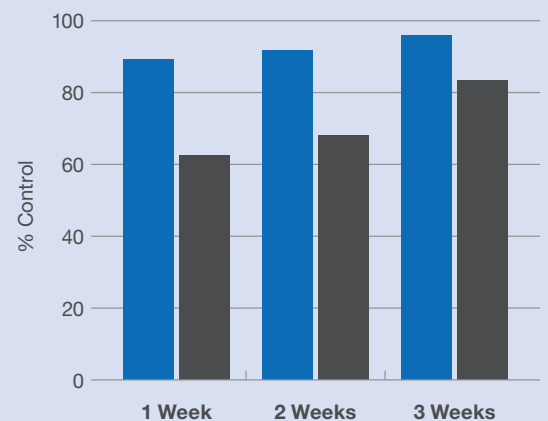
Numerous field and lab tests have shown Tandem is more effective than competitive insecticides across a wide variety of pests, surfaces and structures.

Control of Ants and Other Nuisance Pests around Structures



- Tandem ■ Temprid®
- Florida, 2011, RJM Contracting

Control of German Cockroaches in Structures



- Tandem ■ Phantom® SC
- Florida, 2011, RJM Contracting, Lindsey Pest Control, Apartment Complexes
- Pre-treatment counts averaged 20 adults + nymphs per unit

