

optigard[®] FLEX

LIQUID

Frequently Asked Questions—Optigard[®] Flex Label

Optigard[®] Flex is a broad-spectrum, non-repellent, liquid insecticide that is labeled for both indoor and outdoor use. As Pest Management Professionals (PMPs) have incorporated the product into their regular programs certain label questions arise. The following list is a reference of frequently asked questions from PMPs and distributors. For more information about Optigard Flex, contact the Syngenta Customer Center at 1-866-SYNGENTA.

Q: What is the recommended exterior treatment with Optigard Flex?

A: Optigard Flex is ideal as a backpack or handheld sprayer application to critical entry points and ant trails and as an application to landscape ornamentals that are hosts to food sources. Alternatively, it can be used as a banded application 2 feet up and 3 feet away from a structure. Perimeter application is limited to 2 gallons volume per 1,000 ft², with a total of 17 oz per acre of Flex allowed per year. Please consult the Optigard Flex label for complete instructions.

Q: Spot treatments are listed on the label, what is considered a spot treatment?

A: Generally EPA defines a spot treatment of 2 ft² or less. As long as spots are not contiguous and do not exceed 2 ft², it qualifies as a spot treatment.

Q: Can I treat ant trails?

A: Yes, treatment of ant trails and mounds are included on the label under the Exterior Pest Control section.

Q: The Exterior Pest Control section of the label says "use a 0.1% dilution..." Can I use the lower rate for a maintenance situation?

A: Yes, the table on page 3 of the label that lists 0.05–0.1% rate has the header "Use Optigard Flex Liquid for control of the following pests in voids and around structures." This table on page 3 is referenced in the Exterior Pest Control Section. We generally recommend that PMPs start with the 0.1% rate for best performance. Once you see how that rate works in your particular situation you can begin to see how the lower rates compare.

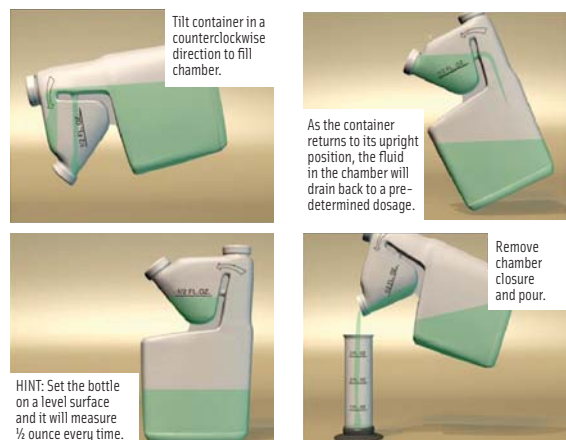
Use Optigard Flex Liquid for control of the following pests in voids and around structures.

Target Pests	Dosage of Optigard Flex Liquid	Remarks
Ants* (except carpenter ants and pharaoh ants)	0.05–0.1%	Use 0.1% rate for heavy pest infestations.
Beetles Boxelder bugs Cockroaches Crickets Earwigs Firebrats Lady beetles Millipedes Pillbugs Silverfish Sowbugs	(0.27 fl oz [8 ml]– 0.54 fl oz [16 ml]) Optigard Flex Liquid/ gal water or finished foam)	*Optigard Flex Liquid may be used as a liquid or foam treatment to control ants (except carpenter ants and pharaoh ants) in termite monitoring stations. Ant (except carpenter ants and pharaoh ants) mounds may also be spot-treated with 0.05–0.1% finished liquid or foam.

For optimal results, use foam application.

Q: What is the "Exact Dose" bottle? I haven't seen this bottle before and have not worked with it. Any tips?

A: As you can see in the pictures below, there is a drain-back tube that empties the measuring chamber, so it fills to ½ ounce every time. The trick is to set it on a flat surface for a few seconds to get the correct volume in the measuring chamber. When you pour the measuring chamber contents into your tank, pour carefully, as shown below, so as not to refill the measuring chamber.



Q: For quantities of 1 gallon mix or less, how do I measure out the 0.05 rate with the tip “N” measure® single dose bottle?

A: We do not recommend that you estimate an amount less than 0.5 oz dose in the chamber. If smaller amounts are needed on a regular basis, Syngenta has provided some blue plastic measuring scoops free of charge to distributors, and B&G Equipment makes a measuring syringe that can handle smaller amounts. To make a gallon mix at the 0.05% rate, you need to measure 0.26 oz or 8 ml of product.

Q: How do I treat landscape ornamental plants for honeydew-producing insects that serve as a food source for ants?

A: Most honeydew-producing insects on food source plants tend to be fairly close to the structure (within 10 ft). Treatment of these plants can be done by either:

- 1) foliar application to cover the plant; if it is a large plant, application to the lower foliage is usually sufficient
- 2) directed spray to the soil at the base of the plant, with the amount used based on plant size.

If applying to the soil, 2–4 oz of spray should work to treat a plant less than 5 ft tall. Larger plants require more. To apply, adjust the sprayer so that several ounces can be delivered within 5–10 seconds. While this treatment can be effective all times of year, spring is the most effective time to use this treatment, timing the application when the plant begins active growth.

Q: Why is the Personal Protective Equipment (PPE) requirement of long sleeves, long pants, chemical resistant gloves, shoes, and socks needed for Optigard? Is there a safety issue?

A: This language for PPE is now standard for products categorized in the lowest category (CAUTION) by EPA, the classification for Optigard Flex.

Q: Can Optigard Flex be used in schools or daycare facilities?

A: While no mention of school/daycare is specifically given on the label, the use is not prohibited. Syngenta often recommends void use of Optigard Flex, which has generally been well received by school IPM groups. Please check with individual state school IPM programs for approved products.

Q: Can Optigard Flex be applied to food-handling areas of food-handling establishments.

A: In areas defined by EPA as food handling—areas for serving, storing, packaging, preparing, storing edible waste, and enclosed processing systems—Optigard Flex is limited to void treatments. In non-food areas of food-handling establishments such as garbage room, lavatories, entries, vestibules, offices, locker rooms, machine rooms, boiler rooms, garages, mop closets, and storage (after canning or bottling), Optigard Flex can be used in crack-and-crevice as well as void applications.

To find out how Optigard Flex can help your business, contact your local Syngenta Sales Representative, call 1-866-SYNGENT(A), or visit www.syngentapmp.com.

optigard **FLEX**
LIQUID

syngenta

A WORLDWIDE LEADER IN PROFESSIONAL PEST MANAGEMENT

©2009 Syngenta Crop Protection, Inc., P.O. Box 18300, Greensboro, NC 27419. ***Important: Always read and follow label instructions before buying or using this product. State registrations may still be pending in certain states. Please check with your state regulatory agency to determine registration status.** Optigard® and the Syngenta logo are registered trademarks of a Syngenta Group Company. tip “N” measure® is a registered trademark of Container Manufacturing, Inc. Syngenta Crop Protection, Inc. warrants that its products conform to the chemical description set forth on the products’ labels. NO OTHER WARRANTIES, WHETHER EXPRESSED OR IMPLIED, INCLUDING WARRANTIES OF MERCHANTABILITY AND OF FITNESS FOR A PARTICULAR PURPOSE, SHALL APPLY TO SYNGENTA PRODUCTS. Syngenta Crop Protection, Inc. neither assumes nor authorizes any representative or other person to assume for it any obligation or liability other than such as is expressly set forth herein. IN NO EVENT SHALL SYNGENTA CROP PROTECTION, INC. BE LIABLE FOR ANY INCIDENTAL, CONSEQUENTIAL OR SPECIAL DAMAGES RESULTING FROM ANY USE OR HANDLING OF ITS PRODUCTS. No statements or recommendations contained herein are to be construed as inducements to infringe any relevant patent now or hereafter in existence. Syngenta Customer Center: 1-866-SYNGENT(A) (796-4368). www.syngentapmp.com