

CONDITIONS: The directions for use of this product are believed to be adequate and should be followed carefully. However, because of manner of use and other factors beyond Bayer CropScience LP's control, it is impossible for Bayer CropScience LP to eliminate all risks associated with the use of this product. As a result, crop injury or ineffectiveness is always possible. All such risks shall be assumed by the user or buyer.

DISCLAIMER OF WARRANTIES: BAYER CROPSCIENCE LP MAKES NO OTHER WARRANTIES, EXPRESS OR IMPLIED, OF MERCHANTABILITY OR OF FITNESS FOR A PARTICULAR PURPOSE OR OTHERWISE, THAT EXTEND BEYOND THE STATEMENTS MADE ON THIS LABEL. No agent of Bayer CropScience LP authorized to make any warranties beyond those contained herein or to modify the warranties contained herein. Bayer CropScience LP disclaims any liability whatsoever for special, incidental or consequential damages resulting from the use or handling of this product.

LIMITATIONS OF LIABILITY: THE EXCLUSIVE REMEDY OF THE USER OR BUYER FOR ANY AND ALL LOSSES, INJURIES OR DAMAGES RESULTING FROM THE USE OR HANDLING OF THIS PRODUCT, WHETHER IN CONTRACT, WARRANTY, TORT, NEGLIGENCE, STRICT LIABILITY OR OTHERWISE, SHALL NOT EXCEED THE PURCHASE PRICE PAID, OR AT BAYER CROPSCIENCE LP'S ELECTION, THE REPLACEMENT OF PRODUCT.

Bayer (reg'd), the Bayer Cross (reg'd), Drione® and Backed by Bayer™ are trademarks of Bayer.

Drione® Insecticide

- FOR INDUSTRIAL/COMMERCIAL USE ONLY
- A DESICCANT DUST
- PROVIDES QUICK CONTROL
- KILLS UP TO 6 MONTHS WHEN LEFT UNDISTURBED
- NON-STAINING AND RELATIVELY ODORLESS
- FOR USE IN RESIDENCES, INSTITUTIONS, FOOD PLANTS AND GRANARIES
- CONTROLS ANTS, COCKROACHES, SILVERFISH, BEDBUGS, FLEAS, LICE, BEES, AND AS STIPULATED IN THE USE DIRECTIONS, ON NUMEROUS STORED PRODUCT PESTS AND TO PROTECT AGAINST ENTRANCE OF DRYWOOD TERMITES.

ACTIVE INGREDIENTS

Pyrethrins:	1.0%
* Piperonyl Butoxide, Technical:	10.0%
Amorphous Silica Gel:	40.0%
** OTHER INGREDIENTS	49.0%
	100.0%

* Equivalent to 8% (butylcarbityl) (6-propylpiperonyl) ether and 2.0% related compounds.

** Contains Petroleum Distillate

EPA Est. No. 432-TX-1

EPA Reg No. 432-992

KEEP OUT OF REACH OF CHILDREN CAUTION

Net Contents:

1 Pound

4191241

4490818 031022B

**BACKED
by BAYER.**

FIRST AID	
If on skin or clothing	<ul style="list-style-type: none"> • Take off contaminated clothing. • Rinse skin immediately with plenty of water for 15 to 20 minutes. • Call a poison control center or doctor for treatment advice.
If in eyes	<ul style="list-style-type: none"> • Hold eye open and rinse slowly and gently with water for 15 to 20 minutes. • Remove contact lenses, if present, after the first 5 minutes, then continue rinsing eye. • Call a poison control center or doctor for treatment advice.
HOT LINE NUMBER [PYRETHROID]	
Have the product container or label with you when calling a poison control center or doctor, or going for treatment. You may also contact 1-800-334-7577 for emergency medical treatment information.	
Note To Physician: May pose an aspiration pneumonia hazard.	

For Product Information Call Toll-Free: 1-800-331-2867

PRECAUTIONARY STATEMENTS Hazards To Humans & Domestic Animals

CAUTION

Harmful if absorbed through skin. Causes moderate eye irritation. Avoid contact with skin, eyes or clothing. Wash thoroughly with soap and water after handling. Containers larger than one pound may not be used or stored in food handling establishments.

Environmental Hazards

This product is toxic to fish. Do not apply directly to water. Do not contaminate water when disposing of equipment washwater or rinseate.

DIRECTIONS FOR USE

It is a violation of Federal Law to use this product in a manner inconsistent with its labeling.

STORAGE AND DISPOSAL

Do not contaminate water, food or feed by storage or disposal.
Storage: Store in original sealed container in a cool, dry place inaccessible to children and pets.

STORAGE AND DISPOSAL (continued)

Disposal: If empty. Non-refillable container. Do not reuse or refill this container. Place in trash or offer for recycling if available.

If partly filled: Call your local solid waste agency for disposal instructions. Never place unused product down any indoor or outdoor drain.

APPLICATIONS WITHIN FOOD AREAS: For use in and around food processing plants and warehouses, bakeries, beverage plants, restaurants, supermarkets, meat and poultry processing plants, hotels, motels, hospitals and schools.

LIMITED TO CRACK AND CREVICE TREATMENT ONLY: Using a bulbous duster, apply a small amount of material directly into cracks and crevices such as expansion joints between different elements of construction or between equipment bases and the floor, wall voids, motor housings, junction boxes or switch boxes, conduits or hollow equipment legs where **Cockroaches, Ants, Silverfish, Spiders, Boxelder Bugs and Crickets** hide. Care should be taken to avoid depositing the product onto exposed surfaces or introducing the material into the air. Avoid contamination of food or food processing surfaces.

APPLICATIONS OF THIS PRODUCT IN THE FOOD AREAS OF FOOD HANDLING ESTABLISHMENTS OTHER THAN AS A CRACK AND CREVICE TREATMENT ARE NOT PERMITTED.

NON-FOOD AREAS: For use in and around homes, institutions, hospitals, office buildings, hotels, motels, theaters, schools, warehouses, truck trailers and railroad cars.

To control crawling insects such as **Ants, Cockroaches, Silverfish, Firebrats, Spiders, Boxelder Bugs, Ticks, Lice and Fleas** in animal quarters, distribute Drione® at the rate of 2 oz/100 sq ft of surface area. Apply a continuous visible film underneath and behind stairs, refrigerators and appliances. Treat on, around and behind moldings, shelving, baseboards, pipe openings, cracks, crevices, and other areas where insects hide. For severe infestations, apply Drione behind cabinets and walls, in crawlspaces and attics at the rate of 16 oz/1,000 sq ft of surface area. Repeat treatment as necessary.

STORED PRODUCT PESTS: To aid in the control of **Cadellids, Cheese Mites, Cigarette Beetles, Confused Flour Beetles, Dark Mealworms, Drugstore Beetles, Grain Mites, Granary Weevils, Red Flour Beetles, Rice Weevils, Sawtoothed Grain Beetles and Yellow Mealworms** in mills, elevators and granaries. Clean up waste materials, dust, dirt, and any other debris. Thoroughly treat floors, walls and other surfaces in bins, storage and handling areas. Apply into cracks and crevices and other difficult to reach areas where insects may hide.

BEES AND WASPS: It is generally advisable to treat **Wasp and Bee** nests in the evening when

insects are less active and have returned to the nest. Using hand or power duster or other suitable means, with extension tubes if necessary, thoroughly dust nest and entrance and surrounding areas where insects align. Beets in wall voids can be located by listening with your ear against the wall. Drill a hole in the area, blow dust in, and reseat. For best results check nests carefully one or two days after treatment to ensure complete kill, then remove and destroy nest to prevent emergence of newly hatched insects. If removal is not feasible, retreat the nest if necessary. Care should be taken when treating overhead nests so that neither the product nor the nest falls on people standing below.

SEWER TREATMENTS: American and Oriental Cockroach infestations in sanitary sewers maybe treated with approximately 6 ounces of Drione per manhole. When treating sewers, one manhole per 200 feet of line should be treated. Treatments are made by removing the manhole cover and replacing with a disc of plywood bored to receive the usual flexible hose from portable or truck-mounted ventilating equipment. Six ounces of Drione is introduced into the ventilating air to be dispersed quickly and thoroughly through the system.

BEDBUGS: Separate bed apart. Dust into joints and channels. If hollow, such as square or round tubing, see that the interior of framework is well dusted. Mattresses should be dusted, especially tufts, folds, and edges. Picture frame moldings and all cracks and crevices in the room should be treated.

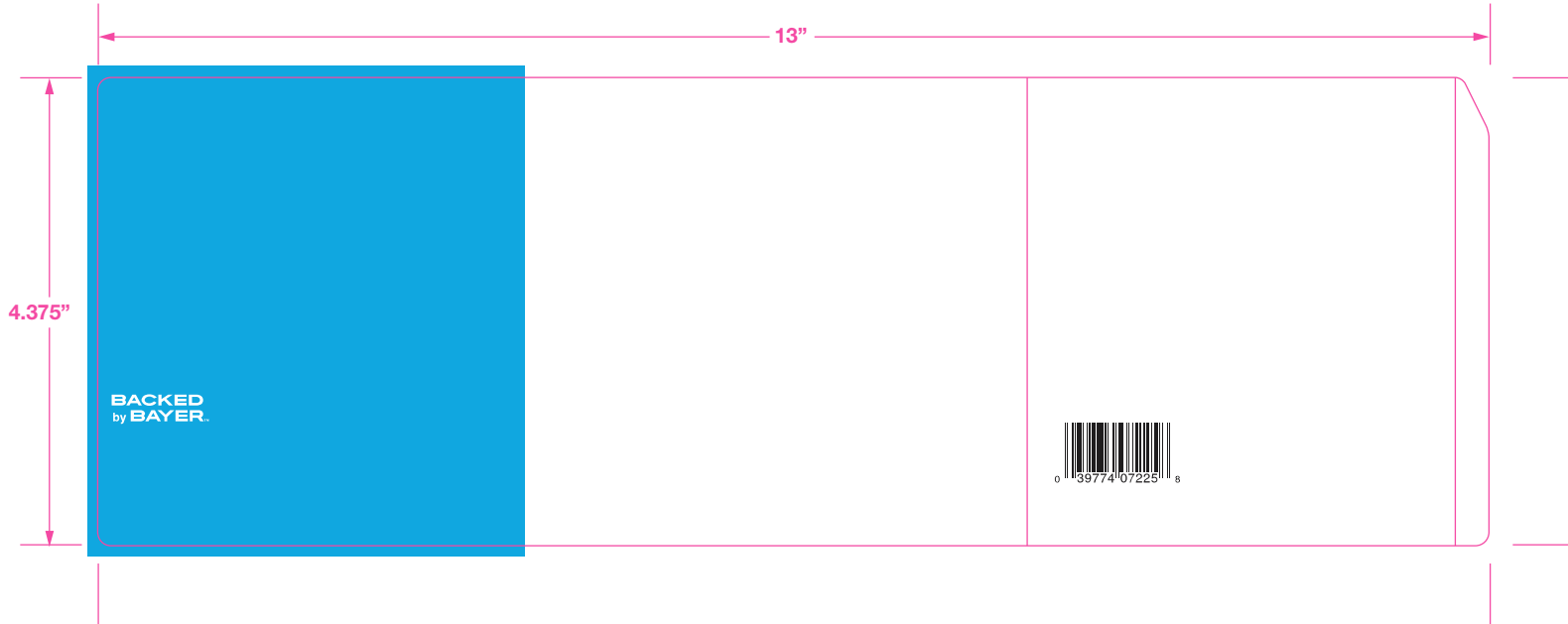
DRYWOOD TERMITES: To protect against entrance, using an electric or hand operated rotary duster, distribute Drione through an entry, e.g. crawl hole into attic and crawl space of building, at a rate of 1 lb/1,000 sq ft of floor area. All vents and blowers on the wind-ward side should be closed. All wood surfaces should be covered. In case of localized infestations probe to locate galleries and drill holes to inject Drione into the galleries. If reasonably heavy infestation has already developed, fumigation should be employed.

FLEAS: Surfaces of kennels should be dusted at the rate of one oz/50 sq ft. Heavily infested lawns, basements, and crawl spaces should be dusted at the rate of 16 oz/1,000 sq ft. Repeat as necessary.

SCORPIONS, PILLBUGS, GROUND BEETLES, EARWIGS, MILLIPEDES, CENTIPEDES AND SCORPIONS: Apply around doors and windows and other places where these pests may enter premises. Treat baseboards, storage areas and other locations where these pests are found.

IMPORTANT: READ BEFORE USE

Read the entire Directions for Use, Conditions, Disclaimer of Warranties and Limitations of Liability before using this product. If terms are not acceptable, return the unopened product container at once. By using this product, user or buyer accepts the following conditions, disclaimer of warranties and limitations of liability.



ERROR: invalidaccess
OFFENDING COMMAND: put

STACK:

/115

1

```
[/.notdef /.notdef /.notdef /.notdef /.notdef /.notdef /.notdef /.notdef  
/.notdef /.notdef /.notdef /.notdef /.notdef /.notdef /.notdef /.notdef  
/.notdef /.notdef /.notdef /.notdef /.notdef /.notdef /.notdef /.notdef  
/.notdef /.notdef /.notdef /.notdef /.notdef /.notdef /.notdef /.notdef  
/space /exclam /quotedbl /numbersign /dollar /percent /ampersand /  
quoteright /parenleft /parenright /asterisk /plus /comma /hyphen /period  
/slash /zero /one /two /three /four /five /six /seven /eight /nine /  
colon /semicolon /less /equal /greater /question /at /A /B /C /D /E /F /  
G /H /I /J /K /L /M /N /O /P /Q /R /S /T /U /V /W /X /Y /Z /bracketleft  
/backslash /bracketright /asciicircum /underscore /quoteleft /a /b /c /d  
/e /f /g /h /i /j /k /l /m /n /o /p /q /r /s /t /u /v /w /x /y /z /  
braceleft /bar /braceright /asciitilde /.notdef /.notdef /.notdef /  
.notdef /.notdef /.notdef /.notdef /.notdef /.notdef /.notdef /.notdef /  
.notdef /.notdef /.notdef /.notdef /.notdef /.notdef /.notdef /.notdef /  
.notdef /.notdef /.notdef /.notdef /.notdef /.notdef /.notdef /.notdef /  
.notdef /.notdef /.notdef /.notdef /.notdef /.notdef /.notdef /.notdef /  
exclamdown /cent /sterling /fraction /yen /florin /section /currency /  
quotesingle /quotedblleft /guillemotleft /guilsinglleft /guilsinglright  
/fi /fl /.notdef /endash /dagger /daggerdbl /periodcentered /.notdef /  
paragraph /bullet /quotesinglbase /quotedblbase /quotedblright /  
guillemotright /ellipsis /perthousand /.notdef /questiondown /.notdef /  
grave /acute /circumflex /tilde /macron /breve /dotaccent /dieresis /  
.notdef /ring /cedilla /.notdef /hungarumlaut /ogonek /caron /emdash /  
.notdef /.notdef /.notdef /.notdef /.notdef /.notdef /.notdef /.notdef /  
.notdef /.notdef /.notdef /.notdef /.notdef /.notdef /.notdef /.notdef /  
AE /.notdef /ordfeminine /.notdef /.notdef /.notdef /.notdef /Lslash /  
Oslash /OE /ordmasculine /.notdef /.notdef /.notdef /.notdef /.notdef /  
ae /.notdef /.notdef /.notdef /dotlessi /.notdef /.notdef /lslash /  
oslash /oe /germandbls /.notdef /.notdef /.notdef /.notdef ]  
[/.notdef /.notdef /.notdef /.notdef /.notdef /.notdef /.notdef /.notdef  
/.notdef /.notdef /.notdef /.notdef /.notdef /.notdef /.notdef /.notdef  
/.notdef /.notdef /.notdef /.notdef /.notdef /.notdef /.notdef /.notdef  
/.notdef /.notdef /.notdef /.notdef /.notdef /.notdef /.notdef /.notdef  
/space /exclam /quotedbl /numbersign /dollar /percent /ampersand /  
quoteright /parenleft /parenright /asterisk /plus /comma /hyphen /period  
/slash /zero /one /two /three /four /five /six /seven /eight /nine /  
colon /semicolon /less /equal /greater /question /at /A /B /C /D /E /F /  
G /H /I /J /K /L /M /N /O /P /Q /R /S /T /U /V /W /X /Y /Z /bracketleft  
/backslash /bracketright /asciicircum /underscore /quoteleft /a /b /c /d  
/e /f /g /h /i /j /k /l /m /n /o /p /q /r /s /t /u /v /w /x /y /z /  
braceleft /bar /braceright /asciitilde /.notdef /.notdef /.notdef /  
.notdef /.notdef /.notdef /.notdef /.notdef /.notdef /.notdef /.notdef /  
.notdef /.notdef /.notdef /.notdef /.notdef /.notdef /.notdef /.notdef /  
.notdef /.notdef /.notdef /.notdef /.notdef /.notdef /.notdef /.notdef /  
.notdef /.notdef /.notdef /.notdef /.notdef /.notdef /.notdef /.notdef /  
exclamdown /cent /sterling /fraction /yen /florin /section /currency /  
quotesingle /quotedblleft /guillemotleft /guilsinglleft /guilsinglright  
/fi /fl /.notdef /endash /dagger /daggerdbl /periodcentered /.notdef /  
paragraph /bullet /quotesinglbase /quotedblbase /quotedblright /  
guillemotright /ellipsis /perthousand /.notdef /questiondown /.notdef /  
grave /acute /circumflex /tilde /macron /breve /dotaccent /dieresis /  
.notdef /ring /cedilla /.notdef /hungarumlaut /ogonek /caron /emdash /  
.notdef /.notdef /.notdef /.notdef /.notdef /.notdef /.notdef /.notdef /  
.notdef /.notdef /.notdef /.notdef /.notdef /.notdef /.notdef /.notdef /  
AE /.notdef /ordfeminine /.notdef /.notdef /.notdef /.notdef /Lslash /  
Oslash /OE /ordmasculine /.notdef /.notdef /.notdef /.notdef /.notdef /  
ae /.notdef /.notdef /.notdef /dotlessi /.notdef /.notdef /lslash /  
oslash /oe /germandbls /.notdef /.notdef /.notdef /.notdef ]
```